

Intersect Palm Springs 2023
Works Available



Siri Berg (1921-2020)

Kabbalah, 1984-85

Oil on canvas

35 x 95 in (88.9 x 241.3 cm)

\$38,500



Siri Berg (1921-2010)

Ten Spheres 22 (Kabbalah Series), 1986

Monoprint

18 x 31 in (45.7 x 78.7 cm)

Framed: 22 x 38 in (55.9 x 96.5 cm)

\$3,200



Siri Berg (1921-2020)

Ten Spheres.23E (Kabbalah Series), 1986

Monoprint

18 x 31 in (45.7 x 78.7 cm)

Framed: 22 x 38 in (55.9 x 96.5 cm)

\$3,200



Ali Della Bitta (b. 1981)

landscaping memory: composition no. 002, 2022

low fire clay, mid-range stoneware, pigmented high fire porcelain, glaze, underglaze, and epoxy, rope, rubber, and metal

7 x 6 x 5 in (17.8 x 15.2 x 12.7 cm)

\$5,500



Ali Della Bitta (b. 1981)

landscaping memory: composition no. 004, 2022

Low fire clay, mid range stoneware, glaze, underglaze, rubber, metal, and enamel paint

7 x 6 x 5 in (17.8 x 15.2 x 12.7 cm)

\$5,500



Ali Della Bitta (b. 1981)

landscaping memory: no. 006, 2022

Low fire clay, mid range stoneware, glaze, underglaze, metal, epoxy, rubber, enamel paint

6 ³/₄ x 7 x 7 ¹/₄ in (17.1 x 17.8 x 18.4 cm)

\$5,500



Ali Della Bitta (b. 1981)

landscaping memory: no. 007, 2022

Low fire clay, mid range stoneware, glaze, underglaze, rubber, plastic, and enamel paint

6 ³/₄ x 7 x 7 ¹/₄ in (17.1 x 17.8 x 18.4 cm)

\$5,500



Ali Della Bitta (b. 1981)

landscaping memory: no. 008, 2022

low fire clay, mid range stoneware, glaze, underglaze, and mixed media

6 ³/₄ x 3 ¹/₂ x 4 ¹/₂ in (17.1 x 8.9 x 11.4 cm)

\$5,500



Judy Dolnick (b. 1934)

Perhaps to Dream (324-C), 1998

Acrylic on linen

36 x 36 in (91.4 x 91.4 cm)

Framed: 37 x 37 in (94 x 94 cm)

\$16,000



Judy Dolnick (b. 1934)

Untitled (228), 1988

Acrylic on canvas

24 x 30 ¼ in (61 x 76.8 cm)

Framed: 25 x 31 in (63.5 x 78.7 cm)

\$12,500



Judy Dolnick (b. 1934)

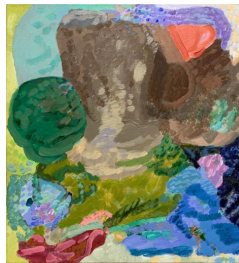
Untitled (181), c.1986

Acrylic on linen stretched over canvas

12 ½ x 17 in (31.8 x 43.2 cm)

Framed: 13 ¾ x 18 in (34.9 x 45.7 cm)

\$5,500



Judy Dolnick (b. 1934)

Untitled (497C), c.1986

Acrylic on canvas

13 ¼ x 12 in (33.7 x 30.5 cm)

Framed: 14 ¼ x 13 in (36.2 x 33 cm)

\$4,500



Judy Dolnick (b.1934)

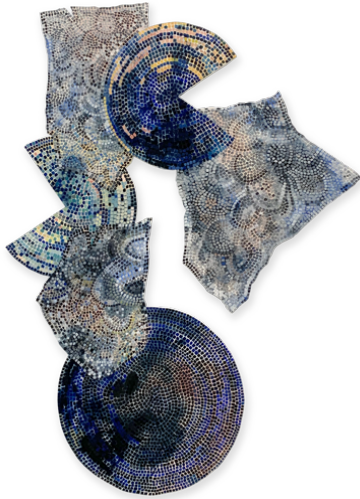
Untitled (315C), 2002

Acrylic on canvas

12 x 12 in (30.5 cm x 30.5 cm)

Framed: 13 x 13 in (33 x 33 cm)

\$4,500



Hermine Ford (b. 1939)

Untitled (433), 2022

Oil and ink on muslin on shaped panel

62 ½ x 45 ½ in (158.8 x 115.6 cm)

\$16,000



Hermine Ford (b. 1939)

Untitled (455), 2021

Ink, gouache and pencil on paper

11 ¾ x 8 ½ in (29.8 x 21.6 cm)

Framed: 15 ½ x 12 ⅛ in (39.4 x 30.8 cm)

\$2,400



Hermine Ford (b. 1939)

Untitled (456), 2021

Ink, gouache and pencil on paper

11 ¾ x 8 ¼ in (29.8 x 21 cm)

Framed: 15 ½ x 12 ⅛ in (39.4 x 30.8 cm)

\$2,400



Joan Mitchell (1925-1992)

Sunflower V, 1992

Lithograph on paper

56 ½ x 41 in (144 x 104 cm)

Framed: 60 x 44 in (152.4 cm x 111.8 cm)

Signed, dated, numbered: '3/34 Joan Mitchell 1992'

Published by Tyler Graphics, Mount Kisco, NY



Elizabeth Murray (1940-2007)

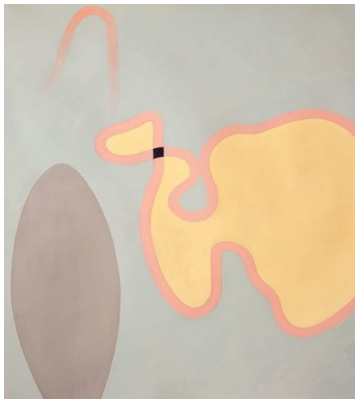
Charlotte, 1998

8 color lithograph on John Koller handmade paper

12 ¾ x 15 ¾ in (32.4 x 40 cm)

Framed: 15 ¼ x 19 in (38.74 x 48.26 cm)

\$1,000



Mimi Chen Ting (1946-2022)

Been There and Back, 2015

Acrylic on canvas

54 x 48 in (137.2 x 121.9 cm)

\$14,500



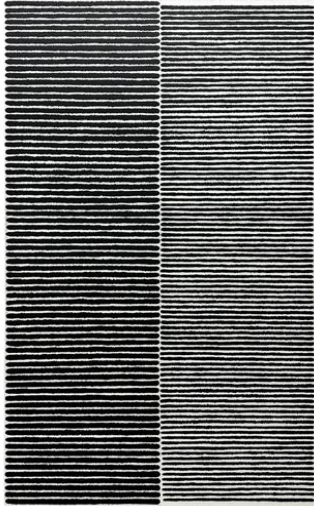
Mimi Chen Ting (1946-2022)

Loves Notes, 2016

Acrylic on canvas

48 x 54 in (121.9 x 137.2 cm)

\$14,500



Joan Witek (b.1943)

P-162, 2013

Oil stick and graphite on canvas

74 x 45 x 2 in (188 x 114.3 x 5 cm)

\$45,000



Joan Witek (b.1943)

P-149 (High Waisted), 2009

Oil on canvas

24 x 24 in (61 x 61 cm)

\$12,000



Joan Witek (b.1943)

P-156, 2011

Oil on canvas

24 x 24 in (61 x 61 cm)

\$12,000



Joan Witek (b.1943)

Untitled, 1991

Watercolor on paper

13 x 17 in (33 x 43.2 cm)

Framed: 20 ½ x 24 ½ in (38.1 x 50.8 cm)

\$3,500