

**Artist Estate Studio at intersect Palm Springs 2023**

Booth #119

Works Available



**Siri Berg (1921-2020)**

*Kabbalah*, 1984-85

Oil on canvas

35 x 95 in (88.9 x 241.3 cm)

\$38,500



**Siri Berg (1921-2010)**

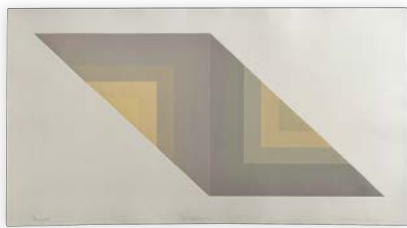
*Ten Spheres 22 (Kabbalah Series)*, 1986

Monoprint

18 x 31 in (45.7 x 78.7 cm)

Framed: 21 ½ x 34 ½ in (54.6 x 87.6 cm)

\$3,200



**Siri Berg (1921-2020)**

*Ten Spheres 23E (Kabbalah Series)*, 1986

Monoprint

18 x 31 in (45.7 x 78.7 cm)

Framed: 21 ½ x 34 ½ in (54.6 x 87.6 cm)

\$3,200



**Ali Della Bitta (b. 1981)**

*landscaping memory: composition no. 002, 2022*  
Low fire clay, mid-range stoneware, pigmented high fire porcelain, glaze, underglaze, and epoxy, rope, rubber, and metal  
7 x 6 x 5 in (17.8 x 15.2 x 12.7 cm)  
\$5,500



**Ali Della Bitta (b. 1981)**

*landscaping memory: composition no. 004, 2022*  
Low fire clay, mid range stoneware, glaze, underglaze, rubber, metal, and enamel paint  
7 x 6 x 5 in (17.8 x 15.2 x 12.7 cm)  
\$5,500



**Ali Della Bitta (b. 1981)**

*landscaping memory: no. 006, 2022*  
Low fire clay, mid range stoneware, glaze, underglaze, metal, epoxy, rubber, enamel paint  
6 ¾ x 7 x 7 ¼ in (17.1 x 17.8 x 18.4 cm)  
\$5,500



**Ali Della Bitta (b. 1981)**

*landscaping memory: no. 007, 2022*  
Low fire clay, mid range stoneware, glaze, underglaze, rubber, plastic, and enamel paint  
6 ¾ x 7 x 7 ¼ in (17.1 x 17.8 x 18.4 cm)  
\$5,500



**Ali Della Bitta (b. 1981)**

*landscaping memory: no. 008, 2022*  
Low fire clay, mid range stoneware, glaze, underglaze, and mixed media  
6 ¾ x 3 ½ x 4 ½ in (17.1 x 8.9 x 11.4 cm)  
\$5,500



**Judy Dolnick (b. 1934)**

*Perhaps to Dream (324C)*, 1998  
Acrylic on linen  
36 x 36 in (91.4 x 91.4 cm)  
Framed: 37 x 37 in (94 x 94 cm)  
\$16,000



**Judy Dolnick (b. 1934)**

*Untitled (228)*, 1988  
Acrylic on canvas  
24 x 30 ¼ in (61 x 76.8 cm)  
Framed: 25 x 31 in (63.5 x 78.7 cm)  
\$12,500



**Judy Dolnick (b. 1934)**

*Untitled (181)*, c.1986  
Acrylic on linen stretched over canvas  
12 ½ x 17 in (31.8 x 43.2 cm)  
Framed: 13 ¾ x 18 in (34.9 x 45.7 cm)  
\$5,500



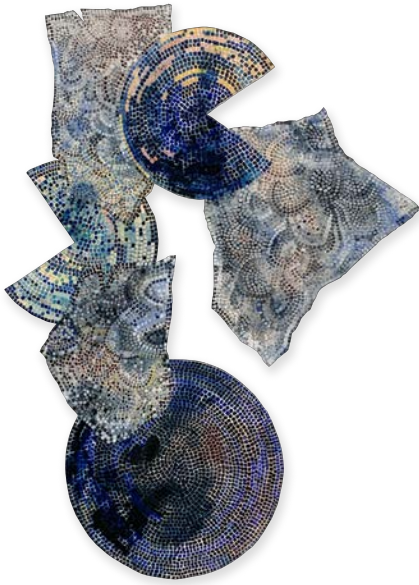
**Judy Dolnick (b. 1934)**

*Untitled (497C)*, c.1986  
Acrylic on canvas  
13 ¼ x 12 in (33.7 x 30.5 cm)  
Framed: 14 ¼ x 13 in (36.2 x 33 cm)  
\$4,500



**Judy Dolnick (b.1934)**

*Untitled (315C), 2002*  
Acrylic on canvas  
12 x 12 in (30.5 cm x 30.5 cm)  
Framed: 13 x 13 in (33 x 33 cm)  
\$4,500



**Hermine Ford (b. 1939)**

*Untitled (433), 2022*  
Oil and ink on muslin on shaped panel  
62 ½ x 45 ½ in (158.8 x 115.6 cm)  
\$16,000



**Hermine Ford (b. 1939)**

*Untitled (455), 2021*  
Ink, gouache and pencil on paper  
11 ¾ x 8 ½ in (29.8 x 21.6 cm)  
Framed: 15 ½ x 12 ⅛ in (39.4 x 30.8 cm)  
\$2,400



**Hermine Ford (b. 1939)**

*Untitled (456), 2021*  
Ink, gouache and pencil on paper  
11 ¾ x 8 ¼ in (29.8 x 21 cm)  
Framed: 15 ½ x 12 ⅛ in (39.4 x 30.8 cm)  
\$2,400



**Joan Mitchell (1925-1992)**

*Sunflower V*, 1992

Lithograph on paper

56 ½ x 41 in (144 x 104 cm)

Edition of 34

Signed, dated, numbered: '3/34 Joan Mitchell 1992'

Published by Tyler Graphics, Mount Kisco, NY

Price upon request



**Mimi Chen Ting (1946-2022)**

*Been There and Back*, 2015

Acrylic on canvas

54 x 48 in (137.2 x 121.9 cm)

Framed: 55 ½ x 49 ½ in (141 x 124.5 cm)

\$14,500



**Mimi Chen Ting (1946-2022)**

*Love Notes*, 2016

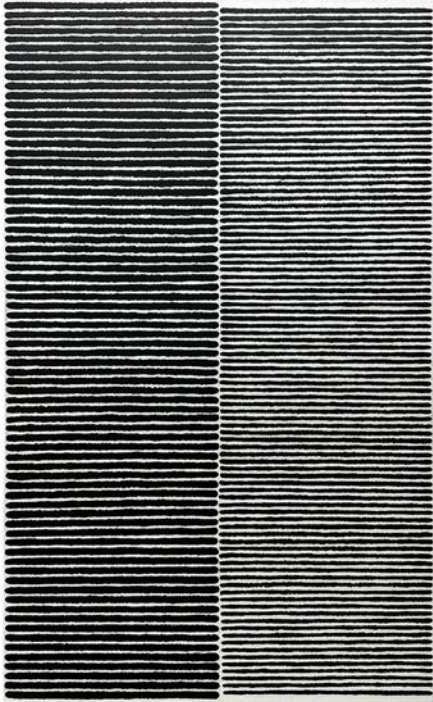
Acrylic on canvas

48 x 54 in (121.9 x 137.2 cm)

Framed: 49 ½ x 55 ½ in (124.5 x 141 cm)

\$14,500





**Joan Witek (b.1943)**

*P-162*, 2013

Oil stick and graphite on canvas

74 x 45 x 2 in (188 x 114.3 x 5 cm)

\$45,000



**Joan Witek (b.1943)**

*P-149 (High Waisted)*, 2009

Oil on canvas

24 x 24 in (61 x 61 cm)

\$12,000



**Joan Witek (b.1943)**

*P-156*, 2011

Oil on canvas

24 x 24 in (61 x 61 cm)

\$12,000



**Joan Witek (b.1943)**

WC-043b, 1991  
Watercolor on paper  
13 x 17 in (33 x 43.2 cm)  
Framed: 20 ½ x 24 ½ in (38.1 x 50.8 cm)  
\$3,500



**Elizabeth Murray (1940-2007)**

Charlotte, 1998  
8 color lithograph on John Koller handmade  
paper  
12 ¾ x 15 ¾ in (32.4 x 40 cm)  
Edition of 40  
\$1,000

"Charlotte" originates from the series of artist prints published by Brooke Alexander for the benefit of the Poetry Project in 1998.

**Sale of editions to benefit The Elizabeth Murray Artist Residency.**

The Elizabeth Murray Artist Residency (EMAR) program by Collar Works is designed to provide a diverse group of emerging and established artists an immersive, supportive, productive, and communal atmosphere for art-making and dialogue on a bucolic 77-acre farm in Washington County.